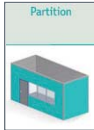


Technical partition with removable skins

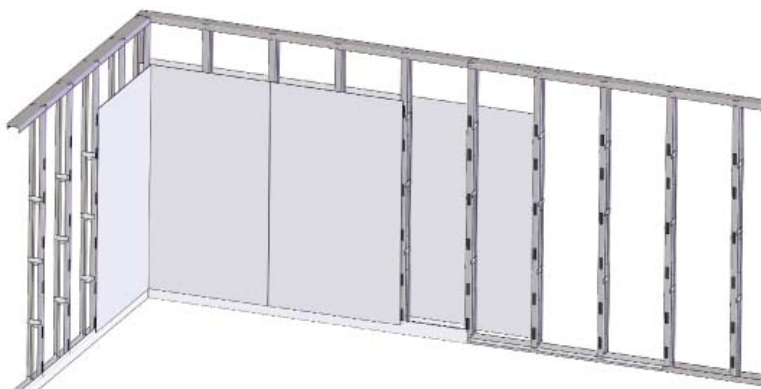


This partition is recommended to separate 2 rooms, or for the incorporation of raceways, air ducts, negatoscopes, screens,... specially to separate operating theatre.

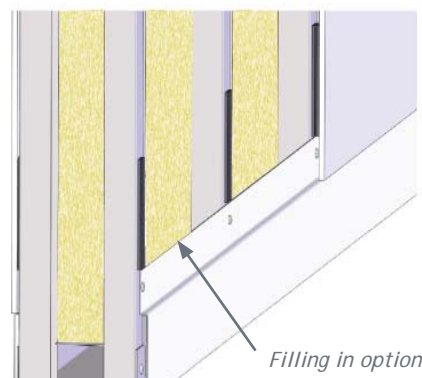
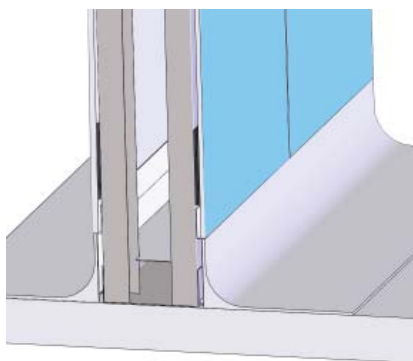


Composition

Of variable thickness (150 mm 5.90" is generally used) it is made up of 2 removable metallic or compact laminate skins on a double frame.



Specific absorbable components can be integrated for acoustic reasons or lead sheets as a X-rays barrier (glass wool, plasterboard plates,...).



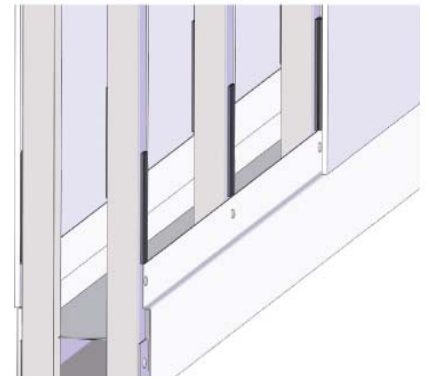
Removable partitions

Fixing by strip

A choice of facings:

- HPL thickness 6 mm 0,2''.
- Panels thickness 15 mm 0,6'' : 2 sides with lacquered steel and honeycomb core
- Panels thickness 15 mm 0,6'' : 2 sides with lacquered steel and plasterboard core

Tightness with neutral silicon mastic



Fixing on the structure with screws

Metallic facings made of sheet stuck on plasterboard.

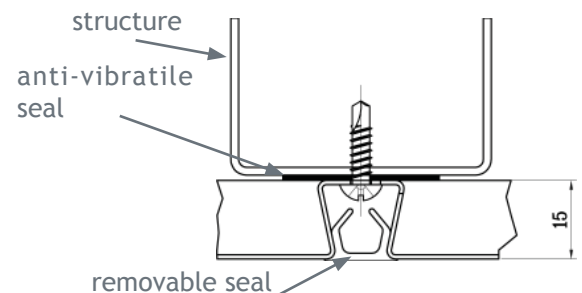
A choice of facings:

- Galvanised steel sheet coating with anti-microbial PVC film thickness 120 µm, colour according to the chart.
- Stainless steel (rough)
- Stainless steel + film PVC + PET, thk. 160 µm, white colour

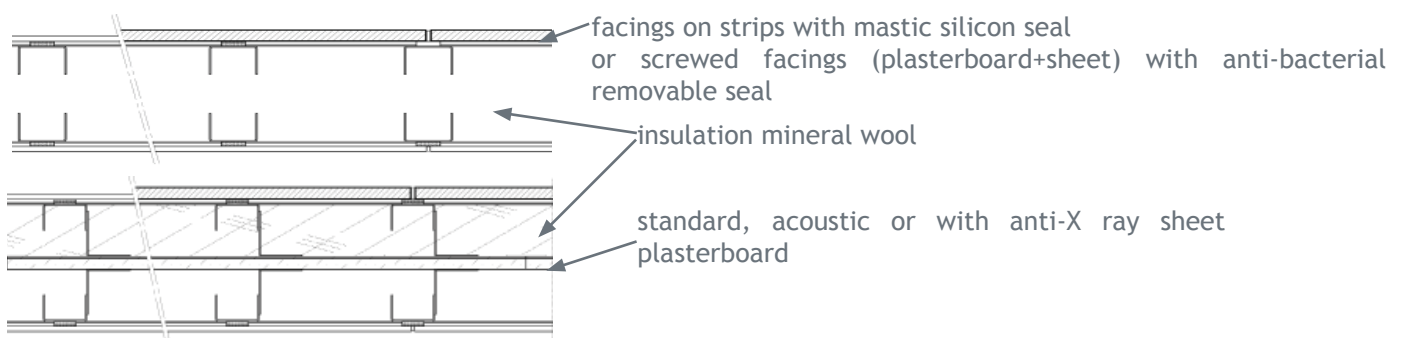


Mechanical fixing on the structure with anti-vibratile seal.

Tightness with antibacterial elastomer seal, removable and washable, grey colour.



Optional filling



Acoustic performances

Depending on the filling elements : $R_w (C;Ctr) = \text{until } 61 (-8; -16) \text{ dB}$

NB : Do not use HPL in non controlled environment (temperatures and hygrometry). Products to be stored and used under controlled ambient temperature from 10°C to 30°C (50°F to 86°F), and RH 40% to 60%.